



# Irish Rose

*"Bee thou faithful unto death and I will give thee the crown of life." (Revelation 2:10)*  
(This scripture passage is located above the Gothic arch on the northeast side of the Sanctuary.)

Spring 2017

## Bee Thou Faithful

By Jill Palof

Bee thou faithful unto death and I will give thee the crown of life. This scripture passage can be found above the Gothic Arch of the Sanctuary at St. Rose. Bees have always played a symbolic role in the rich history at St. Rose of Lima ever since the beginning in 1878 and continue to provide us reminders to this day. As you stroll the grounds, you'll find several species of bees in search of pollen and nectar including

this busy Bumblebee shown on a rose located on the east side of St. Rose. Many of you may not be aware that there is also an image of a honey bee inscribed on the front door handle when you first walk into St. Rose. The word 'Bee' is also found in the scripture passage mentioned above and spelled with two letter e's in the ornate scroll. The extra 'e' was rediscovered while restoring the ceiling in 2007. We don't know why the second 'e' was painted over at some point in history but we do believe that this original spelling was intentional. Even with so much Bee symbolism at St. Rose, we never anticipated the presence of actual honey bees just around the corner from the rose in this photo. Last summer, we discovered that a large hive consisting of several thousand bees had moved into an open space located between the crown molding and the exterior limestone wall. This was an ideal location for their colony to thrive. See page six to learn more.

In 2016, we wrapped up our Building Condition Assessment made possible through a grant from the Minnesota Historical and Cultural Heritage Program. We thank Collaborative Design Group, the architectural firm with extensive experience in historic preservation in Minneapolis, for completing this detailed assessment. You can view the entire report on the projects page of our web site at [www.friendsofstrose.org](http://www.friendsofstrose.org). This seventy-two page document outlines our critical preservation needs and assigns each task a level of importance that includes an estimated cost as well as prioritizes how best to proceed.



Restoration of the copper cross for the spire was completed just in time for visitors to see this up close at the Ice Cream Social before it returns to the top of the spire. This significant accomplishment was made possible by Jerry Vettel who is also the person to thank for removing the finial from the steeple.

The copper cross and its base are currently on display at the Goodhue County Historical Society until the end of July. Come visit the combined exhibit of St. Rose and Cherry Grove Township on the 2<sup>nd</sup> floor of the History Center in Red Wing.

As we mentioned before, the Sacristy has a long list of repairs that includes everything from floor to ceiling and cabinets. This

room was our biggest project during the winter months that began in January of 2017. Jerry Vettel and Rick Keane spent several weeks working to remove the rotted floor, replace floor joists and make many more necessary repairs to the walls and ceiling. There were some unexpected surprises with this project as well that you can read about on page ten through eleven. We are currently in the process of designing cabinets to install on the west wall. We have also drafted plans to build replication altars that match the scale and size of the original altars. Other goals include sidewalk and exterior stairway repairs and retaining wall restoration after we finish using heavy equipment for the spire restoration.

St. Rose will be open to the public on the third Saturday of each month during June - September from 12:00 pm to 2:00 pm.

Thank you for your part in preserving St. Rose for future generations and for making it possible to experience this piece of our rural Minnesota immigrant history for many years to come.

We invite you to attend these upcoming events:

**Memorial Day Mass** Monday **May 29<sup>th</sup>** 11:00 am  
**Ice Cream Social** Saturday **August 19<sup>th</sup>** 2:00 pm - 5:00 pm  
**Candle Lighting Ceremony** Sunday **December 17<sup>th</sup>** 2:00 pm

**St. Rose Summer Hours: 12:00 Noon - 2:00 pm**  
**3rd Saturday of each month June - September**

Visit [www.friendsofstrose.org](http://www.friendsofstrose.org) for more information.

# Memorial Day Mass



The first event held each year is our Memorial Day Mass. We gather to remember our loved ones and Veterans who are laid to rest in the St. Rose cemetery.

On May 30, 2016, Fr. Robert Altier from Pine Island presided.

We were blessed with beautiful music by vocalists along with the sound of

the original pump organ that filled the air at St. Rose. As you can see in these photos, the communion rail and the original St. Rose paten were used during Holy Communion. This historic paten is inscribed: "In Memory of Mr. and Mrs. George and Alice Devlin, Cherry Grove, Minnesota". St. Rose was built on the George Devlin property in 1878 and this Communion paten was found in a box up in the attic of the church office at St. Paul's in Zumbrota when we first

began this restoration. Alice Devlin passed away in 1890 and her husband George Devlin passed away in 1898.

Paula Breid, Ann Tescher, and Carol Nelson sang from up in the choir loft while Jim Keane played the original 1880's pump organ.



The congregation knelt at the wooden Communion rail. The original paten was held by an altar boy to distribute Holy Communion just as this would have historically occurred at St. Rose.



Altar Boys to the right are Johnny Bauer, Nicholas Bauer and Charles Nelson.



# Cemetery Blessing

The Cemetery Blessing has been a tradition that means so much to the families with loved ones and Veterans buried at St. Rose. It is always an emotional experience and we were fortunate to have beautiful weather on



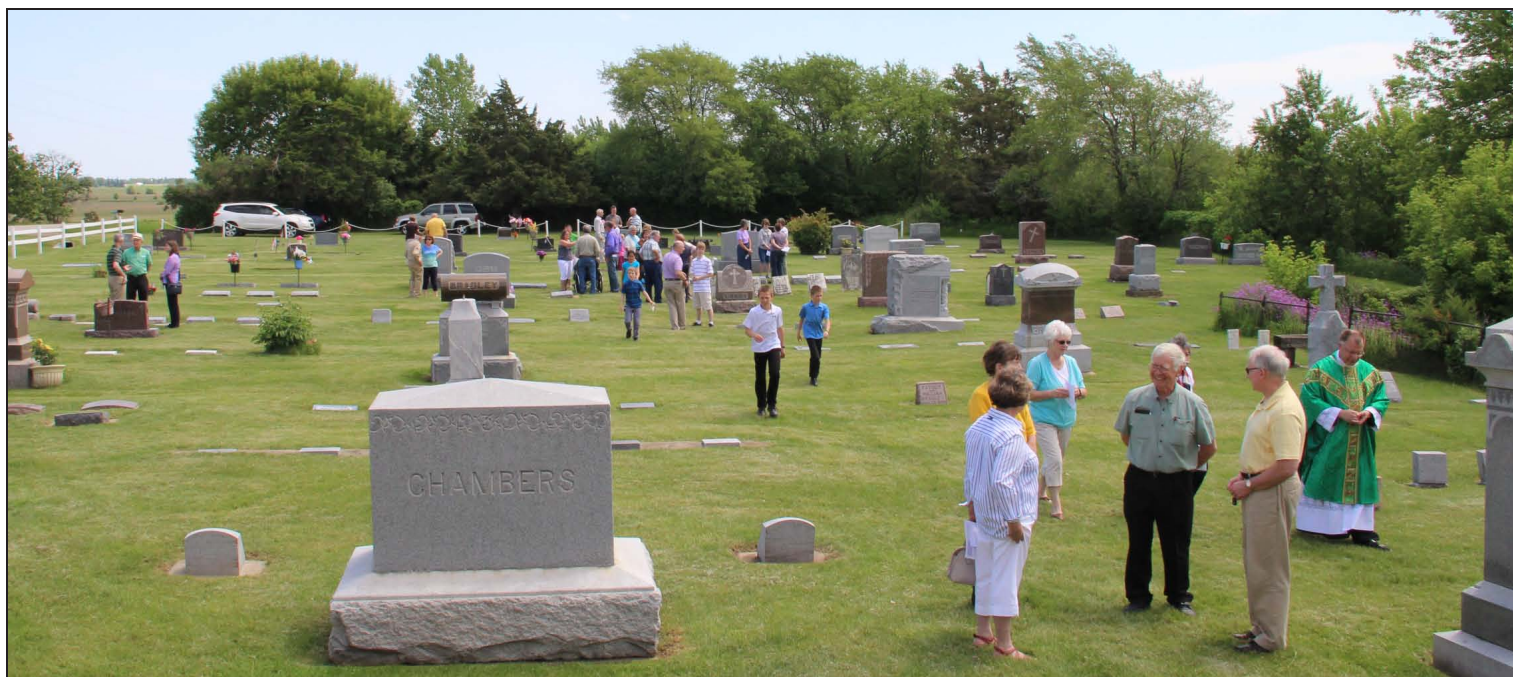
Memorial Day.

Father Altier blessed the graves while the cemetery bell was rang by Scott Hill. Those gathered heard Rick Keane and John Palof play Echo Taps on their trumpets while Hugh O'Kane and Ann Tescher saluted the American flag as shown here.

We invite you to join us this Memorial Day to recall what this day is about on Monday, May 29, 2017 at 11:00am.



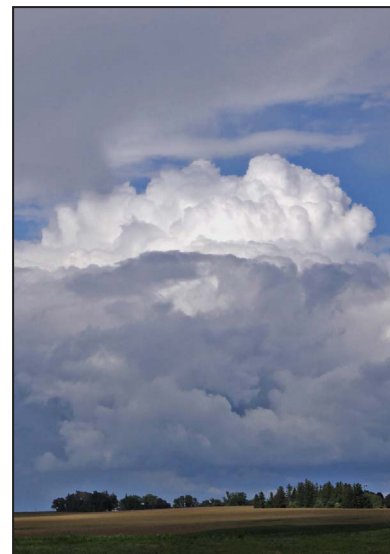
Hugh O'Kane and Ann Tescher salute the American flag while Echo Taps is played by Rick Keane and John Palof. Scott Hill tolled the bell while the crowd stood in silence.



# Ice Cream Social



The impressive red and white tent belonging to Nancy Ronningen was put up in the pouring rain on Saturday morning, August 20, 2016. We expected a lower turn out due to the inclement weather and discussed having 'Out of the Blue' Dixieland Band play inside instead of on the O'Kane hay wagon. A Severe Thunderstorm Watch was also issued and storm clouds could be seen in every direction, with the exception of St. Rose. Many people drove through isolated storms to attend and were prepared with umbrellas and wore rain coats in anticipation. Ironically, it was dry and sunny all afternoon while guests enjoyed three flavors of ice cream from Cold Stone Creamery. We watched the dramatic clouds roll past by from our high vantage point and heard occasional rumbles of thunder in the distance. We promptly took down the tent at 5:00pm. The wind picked up as we packed and heavy rain returned by 6:00pm. We couldn't believe how fortunate we were that Mother Nature spared us for this outdoor event.



Storm clouds could be found in every direction and thunder rumbled in the distance. Shortly after we took down the tent, the rain returned and continued throughout the night.



Above: This photo shows how prepared we were for rain that afternoon. It rained all morning but the sun broke through the clouds without any rain falling at St. Rose during the Ice Cream Social.

# Copper Cross & Finial



For those of you who don't know, Jerry Vettel is the person to thank for removing the base of the finial from high on top of the spire back in 2013. There are few people like Jerry who are not afraid of heights or challenges of this magnitude.

The original cross broke off during a storm and has been missing for decades. We referred to historic photos of St. Rose to replicate the cross and restore the spire. The original finial was constructed of only wood that was still located inside the base and wrapped in copper at some point to protect the finial from decay and birds.



Copper finial with green patina before restoration. Jerry Vettel took the aerial photos back in 2013.



It took more much more time to plan this restoration than it did to actually achieve. Flat sheets of copper were bent, wrapped and soldered around a new cedar cross that includes a stainless steel pipe in the center for stability. This was on display during 2016 Ice Cream Social and was placed in a prominent location for visitors to see before returning to the top of the spire.



Brian O'Kane's straw bales travel to St. Rose on the 'Stage' above.





# Honey Bee Extraction

There are always unanticipated projects that arise, especially while maintaining an historic site. The discovery of a thriving honey bee colony inside the northeast corner at St. Rose in the summer of 2016 was one of those projects. Jill Palof works with Mike Mackiewicz, a beekeeper and once a Master Gardener from the University of Minnesota, who happens to own and operate Bone Lake Meadows Apiary located in the St. Croix River Valley in Washington County, MN. Mike recently took first place for honey at the 2015 Minnesota State Fair so he knows a lot about honey bees.



The handle on the front door at St. Rose has a honey bee as you can see in the photo above. The Irish may have chosen this door handle because the Bee is a Catholic symbol of the Blessed Mary and represents her purity.

When Mike heard there were honey bees at St. Rose, he asked to see pictures to confirm this was true before getting his hopes up too high. Mike was very surprised and even more impressed that these appeared to be 'clean bees' without the presence of mites that are currently plaguing honey bee colonies. They practice chemical-free beekeeping so this colony would be in the desired clean condition.



The best time of year to extract honey bees is in the fall. On September 11, 2016, Bone Lake Meadows Apiary arrived early in the morning. They came well prepared with Paul Mack, a carpenter, who gave the extra care needed for this historic structure along with a photographer, Jeni O'Brien, who took drone footage. Mike anticipated they would find a small colony of 10,000 bees because we thought this hive was new in 2016. The colony was in fact between two or three years old and had grown to approximately 50,000 - 70,000 bees!



# Searching for the Queen Bee

The northeast location of the hive at St. Rose provided a perfect climate for the colony to thrive. It was so large that we found honey dripping into the Sanctuary! Scaffolding was erected the day before allowing an entire day for the hive extraction. Bone Lake Meadows Apiary arrived well prepared with all the tools necessary to carefully remove the millwork and safely transfer the bee colony. Honey combs contain all of the food needed for the hive to survive and to feed their young during the winter months so it's critical that the bees are moved along with their beautifully constructed combs. Paul and Mike gently cut out and removed each honey comb and searched for the Queen Bee before carefully placing them into the carrying case.



The Queen Bee was found that day and successfully transported but unfortunately she didn't survive for very long. As bees do so well, a new Queen Bee was quickly established by the colony and she was named 'Queen Rose'. There is a small wooden steeple attached to the top of their new home in Scandia, MN, which serves as a reminder of their humble beginnings at St. Rose.

Mike used the extra beeswax to mold six candle sticks that were lit during the Candle Lighting Ceremony. The extra honey from the extraction was also preserved and served to guests who attended the Candle Lighting reception.



Paul Mack and Mike Mackiewicz search for the Queen Bee.



We never anticipated that St. Rose would become the home to between 50,000 - 70,000 thriving honey bees!

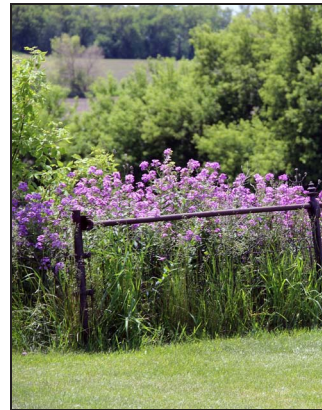
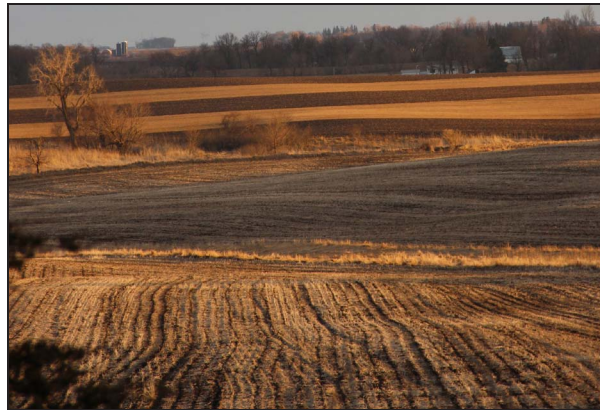
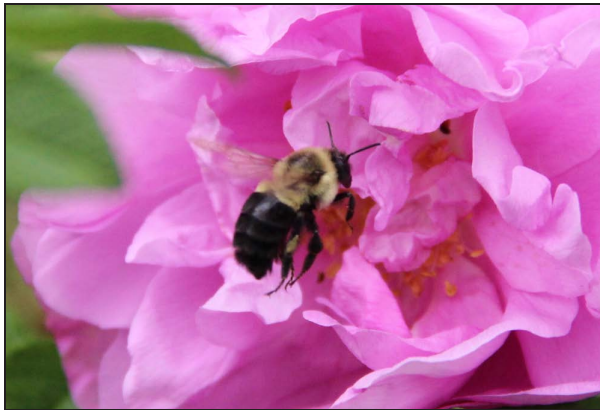
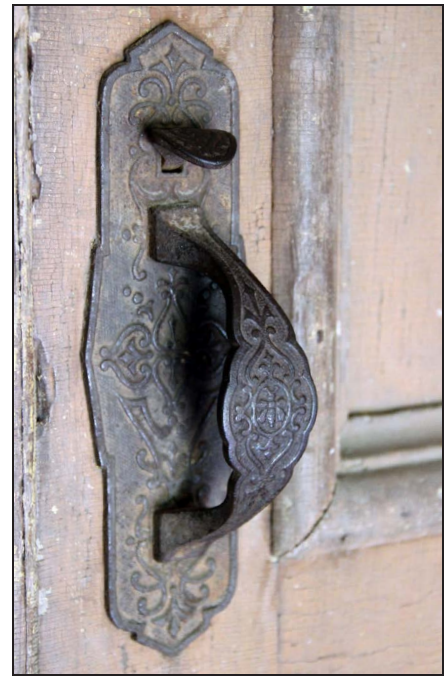


Six golden yellow candlesticks were molded by Mike Mackiewicz using the extra beeswax from the extraction and lit for the first time during the 2016 Candle Lighting Ceremony. Beeswax candles actually burn brighter and emit a soft honey fragrance that is unique to each hive.

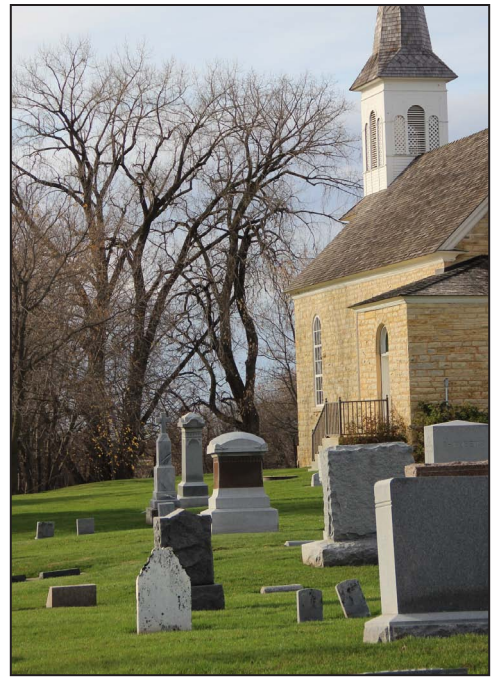


Jerry Vettel and his wife Loraine inspect a honey comb that was just extracted from the bee hive. This large hive was located in an open air space between the crown molding and exterior limestone wall on the northeast corner of St. Rose.

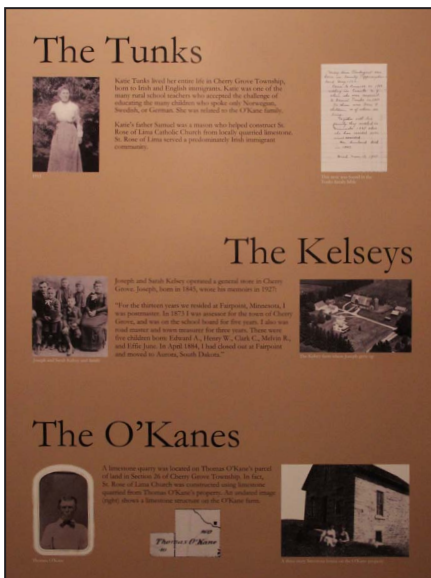
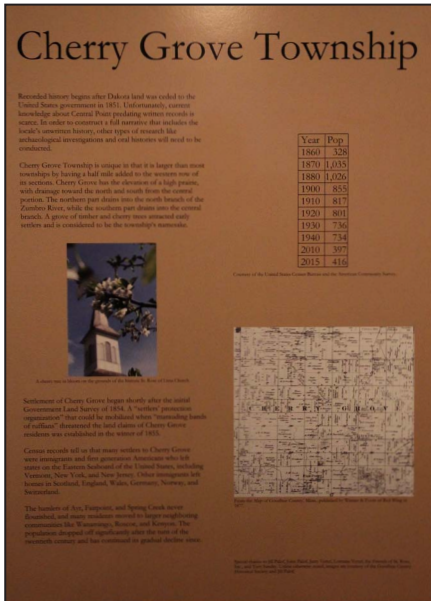
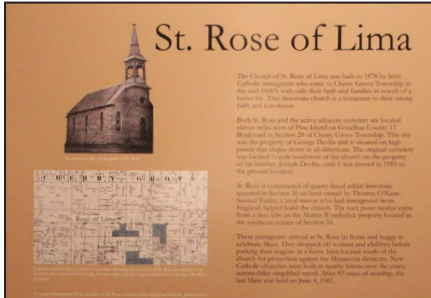






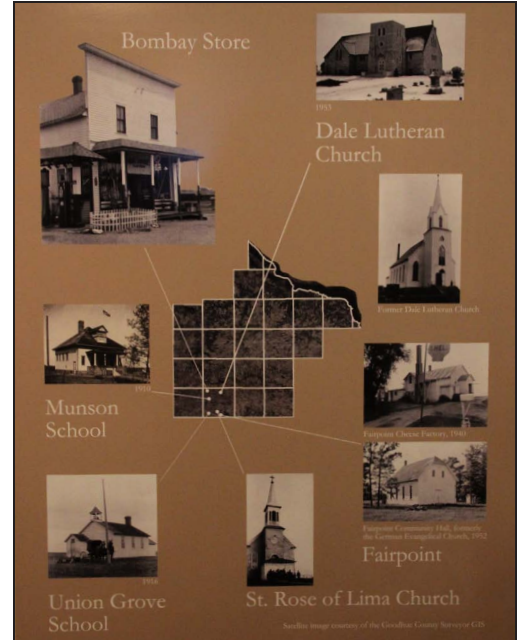


# St. Rose of Lima & Cherry Grove Township



Remembering our past and sharing this by documenting our local history is something that our county history centers do so well. In November, the Friends of St. Rose, Inc., was asked if we would like to participate in a combined exhibit with Cherry Grove Township. The Goodhue County Historical Society has been displaying every Township for the past several years and Cherry Grove is one of the last townships to present to the public. Of course, we said yes to this opportunity and spent many hours organizing photographs and historical information about St. Rose of Lima.

The result of all our efforts is shown on this page. These display boards and artifacts are in the Goodhue County History Center located at the end of the hallway on the second floor. The Friends of St. Rose will be given all of the display boards to keep when the exhibit is finished at the end of July which makes our efforts to collect this information worthwhile.



These display boards are at the Goodhue County Historical Society in Red Wing. This combined exhibit will be open to the public until the end of July.



The Prie Dieu kneeler from St. Rose is shown above and the display case includes the rug from the Sanctuary. The display to the right has a cedar shingle with a woodpecker hole from the spire restoration and stained glass pieces found over the years.

Tom Sundry, former Board member and past parishioner at St. Rose, provided the story about Katie Tunks shown on the display board to the left.

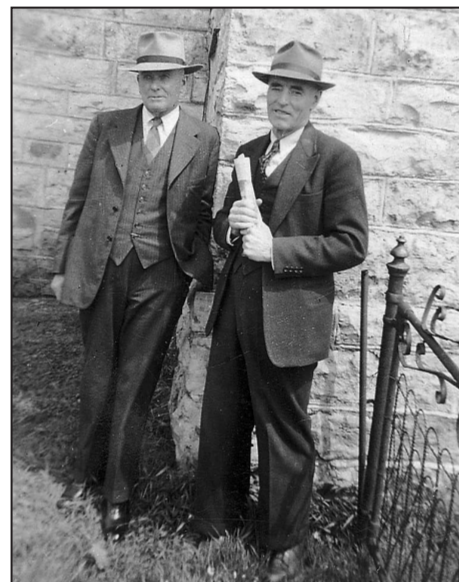
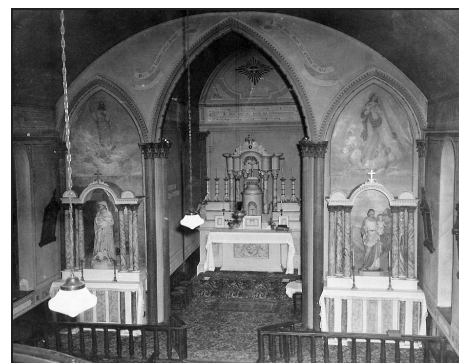
The copper cross and base to the right barely fit inside this room with only 2 inches to spare between the top and the tin ceiling above.

This display case includes the crucifix and candlesticks from the altar, communion paten, prayer cards, oil lamp from the pump organ, and the Sacristy mirror.



# Church of St. Rose of Lima

Preparation for the exhibit also included an invitation to give a 'History Break' presentation at the Goodhue County Historical Society. This involved telling both the history of St. Rose and the Friends of St. Rose, Inc. History Break is a lunchtime learning program series held every third Wednesday of the month at noon. Jill Palof gave a one hour presentation on April 19, 2017, which started in 1878 and finished in the present day. This began with a Powerpoint presentation about St. Rose of Lima followed by a second Powerpoint about the Friends of St. Rose. Over 450 pictures were presented including these historic photos. The two most recent additions to our collection came from Linda Broin of the altar boys in the photos with scalloped edges below. We welcome and encourage you to share pictures you may have of St. Rose to help us visually preserve the past.



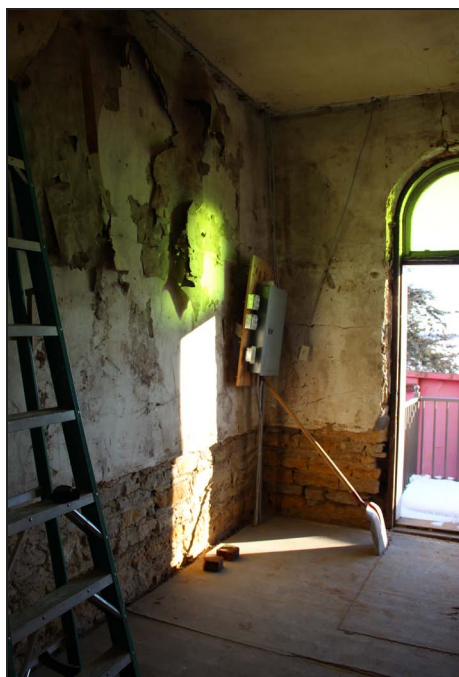
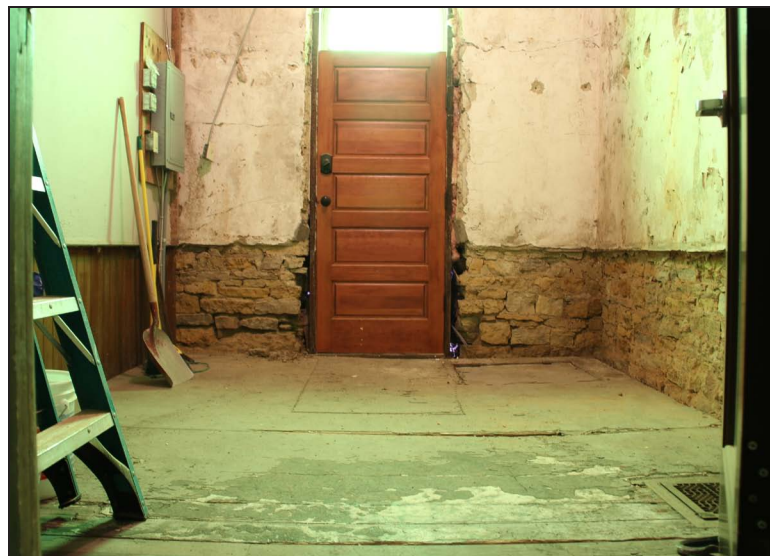
# Sacristy Restoration

Before the roof was repaired in 2005, there used to be a very large hole in the ceiling of the Sacristy where the chimney meets the roof. Over the years, ice build-up, snow and rain must have taken its toll on this low pitched roof on southeast corner of the building which created an equally large hole in the floor below. For years, this room was roped off because it was especially hazardous since we didn't have the electricity updated yet making this end of the church completely dark. Marv Bronner volunteered to repair the floor and made it safe for the public to enter. He also installed the glass panel door to the Sanctuary and installed the carpeting to cover up the old floor just in time for us to celebrate our first Memorial Day Mass in 2008.

The Sacristy restoration has been on our project list since the beginning. We rented a large dumpster and began this project in January of 2017. The southwest corner shown below and also in the upper right corner of the other photo above shows the outline of a trap door that gave access to the crawl space below. There is also an original heat vent near the chimney that has not been in use since the coal burning furnace was operational. This floor has always had a lot of 'personality' as well as the door frame and the window above the door.

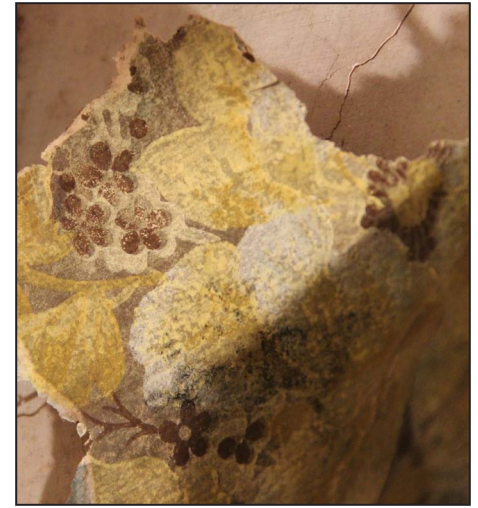
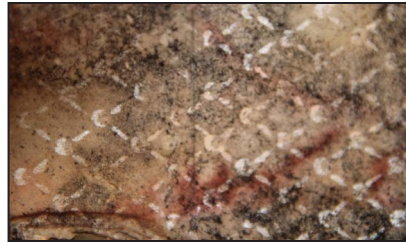
The plaster around the door was very unstable and missing all together in some places so we needed to remove all of the plaster on the south wall first. As with many projects, you don't know what your going to discover until you begin. It soon became evident that all of the lathe and plaster was not stable enough and needed to be removed.

We also discovered that there was another lathe and plaster wall above the chair rail and that the lumber was placed right over the exterior stone wall without any insulation or moisture barrier. The limestone shown below was so interesting that we decided to keep a small section exposed by the Sanctuary door for people to see after we finish this restoration project. The biggest surprise of all was when we found that there was a different original 1800's wall behind the damaged walls with layers of old wallpaper that were still attached. There were actually three layers of historic wallpaper!

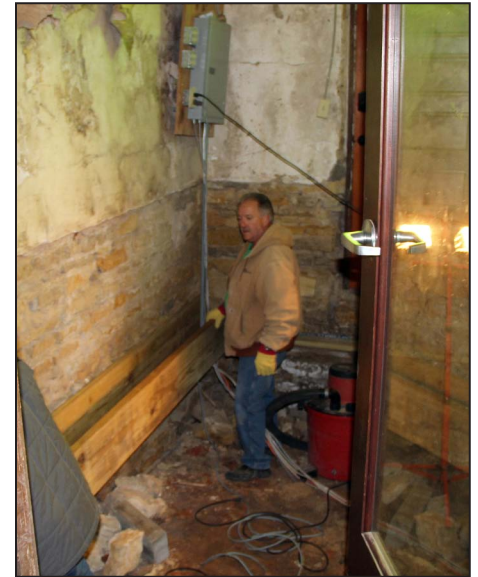




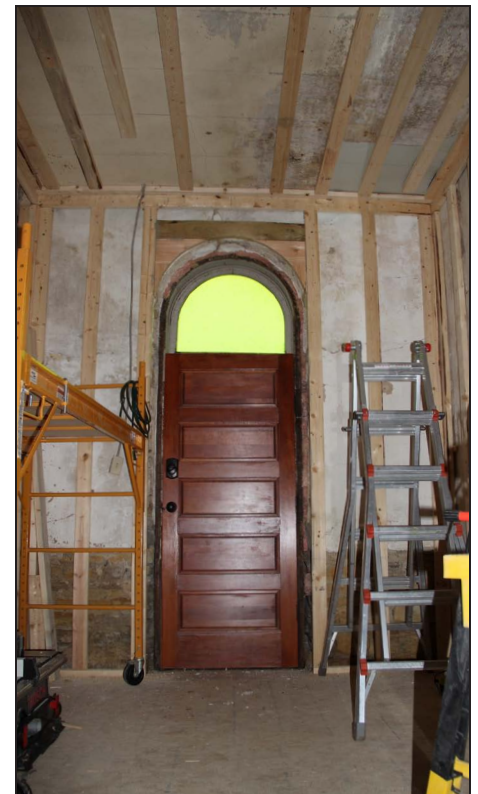
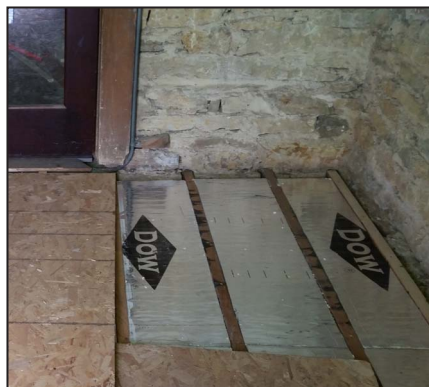
The Sacristy floor has always had a lot of 'personality'. We found a lot of damage when we repaired a large hole in the floor for safety reasons in 2002. The walls had many issues as well, especially around the south door where lathe and plaster was visible and deteriorating. What we didn't anticipate was the discovery of three layers of wallpaper underneath this layer of plaster dating from the late 1800's and still mostly preserved.



The original limestone walls in the Sacristy were chiseled as shown here to receive the joists and floor boards. This surface was found to be perfectly level and straight to fit the timber.



The floor joists were rotted beyond repair after years of moisture from a hole in the ceiling near the chimney and around the south door. Rick Keane and Jerry Vettel removed the entire sub-floor and replaced this from the ground up. They added insulated panels between the floor joists and connected the original floor grate they discovered to the furnace with a new air duct. Now we can finally heat the Sacristy.



# Candle Lighting Ceremony



Pastor Don Bakken presided for the second time during our Candle Lighting Ceremony held on December 18, 2016. He gave a wonderful message to all who braved the very cold temperatures and attended on that bright sunny day. The temperature at sunrise was a mere twenty degrees... below zero! Pastor Bakken lived in Cannon Falls when he first presided during our 8th Annual Candle Lighting in 2010. Don and his wife Avonne currently reside much closer to St. Rose in Wanamingo. We're so grateful to both Don and Avonne for coming on this winter day.

Perhaps the most remarkable 'highlight' was the 'light' that came from six beeswax candles made

possible by the St. Rose Bees and Bone Lake Meadows Apiary. The hive that began only a few feet away on the other side of the limestone wall represented the light of the season on the altar. Beeswax candles shine brighter because they emit a higher purity of flame than modern candles with a high plastic content. Another notable feature of these pure beeswax candles is the rich dark blonde color and the natural honey fragrance that only nature can produce. The scent and taste of honey is unique to each individual hive depending on what they pollinate. Not surprisingly, St. Rose honey tastes like clover honey with a blend of other local food sources such as roses, wild flowers, blackberries, wild plum, apple and cherry tree blossoms found throughout Cherry Grove Township.



Six candlesticks were made for the Candle Lighting Ceremony using beeswax from St. Rose honey bees.



'Bee thou faithful' has the first word deliberately spelled with two letter e's.



The music of the season filled the air with brass players from left to right: Mitch Severson - Tuba, Jim Krueger - Baritone, Paul Tamminga - Trombone, Rick Keane - Trumpet, John Palof - Trumpet and Micha Johnson also on Trumpet.



The weather was bitterly cold outside but was warm inside.



# Thank You to our March 2016 - April 2017 Contributors



## General Fund Contributions:

Jim and Jane Adams  
Dennis Ahern  
Gary and Van Bakko  
Paulette Kylo Barnhart  
Janet Bauch  
Rose Berg  
Todd and Linda Broin  
Marv and Alice Bronner  
Corky (Minor) Buckingham  
Robert 'Bud' Budenski  
Jim and Phyllis Buehler  
Carole Cardinal  
Wayne Clark  
James Clark  
James and Janet Edlund  
Scott and Antoinette Eichhorn  
Betty Fischer  
Earl and Ruth Fredrickson  
Jim and Helen Frigaard  
Steven and Rose Gerdes  
Rodney and Susan Hazelton  
Richard and Vonna Henry  
Mary Ann Henry  
Harvey and Shirley Hiebel  
Scott and Catherine (Katie O'Kane) Hill  
IBM  
Rick and Jeanne Judge-Keane  
Butch (Paul) and Susan Klipsic  
Dean and Chris Kneeland  
Larry and Luanne Koshire  
Marjorie Kylo  
Norman and Judith Larson  
Susan Larson  
Craig and LuAnn Lewer  
Gregg and Kathy Luebke  
David and Carol McDonald  
Newell and Ramona McGee

Ellen Mittelstadt  
Joe and Mary Ann Mittelstadt  
Lloyd and Joan Harris-Meyer  
Cynthia Nosek  
Hugh O'Kane  
John and Jill Palof  
Delmer and Joanne Paulson  
Suzanne Pechacek  
John and Rose Perra  
Dale and Carolyn Reinecke  
Kelly and Joann Ronningen  
Kurt and Alli Ronningen  
Lucille Ronningen  
Nancy Ronningen  
Shelly and Madelyn Shelstad  
James Shoberg



Leon and Irene Spreiter  
John and Lynn Stansfield  
Rod and Renae Streich  
Donald and Wendy Stroebel  
Jerry Suhr  
Tom and Rita Sundry  
Jean Tamminga  
Paul and Carol Tamminga  
Joe and Val Terrell  
Ren and Ann Tescher  
Ron and Carol Trelstad  
Harvey and Margaret Tri  
Mary Unger  
US Bank  
Jeremy and Kerri Vangness  
Robert and Dianne Vangness  
Gerald and Loraine Vettel  
Roland Winters

## Rose Noser Memorial

Robert and Arlene Noser

## Hughes Family Fund

Charlotte Hughes

## Larry and Lucille Miller Memorial

Mary Miller  
Jack and Lynn Stansfield

## John O'Kane Memorial

Sandra Anderson  
Todd and Becky Ashley  
Kevin Auge  
Richard and Denise Auge  
Marilyn and Michelle Balow  
Tom and Karen Brown  
Terry and Beth Beck  
Dale and Tracey Boeff  
Thomas and Rayma Mae Brunner  
Dave and Maureen Collins  
Andy and Joan Decker  
Tom Donovan  
Tim and Kathy Emholtz  
Shelly Espinoza  
Jane Evans  
Bill and Colleen Evenson  
Glenn and Eileen Frisch  
Bob and Shari Goulet  
Jerry and Helen Goulet  
Raymond and Kathleen Hanson  
Marcia Herron  
Rosemary Herron  
Terry Heron Family  
Renee Hildebrand  
Scott and Katie Hill



# Thank You March 2016 - April 2017 Contributors continued...



## Looking Ahead

As you can see, we have certainly come a long way over the past 15 years and the building is stabilized. The big list of projects has been getting smaller but there are still some major projects we need to address and some of the original projects are in need of maintenance

### John O'Kane Memorial Continued

Greg and Mary Kranz  
Ruth Kunkel  
Jean Ludesher  
Gregg and Kathy Luebke  
Tom and Joleen Majerus  
Joseph McDermott  
Mark and Cathy McLean  
Charles and Lori Miller  
Larry and Ennie Miller  
Curt and Mary Oeltjenbrun Family  
Tom and Deb Offner  
Glenn and Kris O'Kane  
Hugh O'Kane  
John O'Kane Children and Family  
Mary Ann O'Kane  
Tracy O'Kane  
John and Jill Palof  
Maury and Sherry Perron  
Margaret Pissarreck  
Mary Quinlivan  
John and Victoria Redpath  
Kelly and Joann Ronningen  
Jack and Lynn Stansfield  
Jerry and Marcia Swedeen  
Bernie and Marcy Sylvester  
Tom and Jan Sylvester  
Edward and Patricia Zappa



and replacement. Just like owning a home, the used furnace that was all that we could afford back in 2008 needs to be replaced and the crown molding painted in 2005 is peeling. We also need to attach the cross to the steeple and once this is finished, make several repairs to the grounds including the sidewalks, stairs and retaining walls.

We hope that the current exhibit at the Goodhue County Historical Society will increase our exposure and welcome visitors to St. Rose. We encourage the readers of this newsletter to come out for a drive during our open house hours and make St. Rose part of a road trip. It takes a lot of support both from our tireless volunteers and generous donors to make all of this possible.



### Treasurer's Report

General Fund: \$18,754

Restricted Fund: \$6,405

[contact\\_us@friendsofstrose.org](mailto:contact_us@friendsofstrose.org)

[www.friendsofstrose.org](http://www.friendsofstrose.org)

Friends of St. Rose, Inc.

10155 505th Street

Kenyon, MN 55946

*T*hank you for supporting the preservation and restoration of St. Rose over the past fifteen years.

Thanks to all those who graciously donated to our general fund and to memorials for their loved ones.

Thanks to our volunteers for their valuable skills, their time and the many tools they brought to help.

Thanks to those who support our annual events by bringing treats to share with us year after year.

Thanks to all the anonymously given cash donations and all those who attend our events.

We greatly appreciate the dedication and shared mission of historic preservation demonstrated by this significant commitment to this historic site.

Friends of St. Rose, Inc., Board of Directors:  
Corky Buckingham, Richard Henry, Rick Keane,  
Kathy Luebke, Jill Palof, Kelly Ronningen and  
Jerry Vettel.

